

# NOTE: TYPICAL M600 PROJECT OUT WINDOW - INSTALLATION

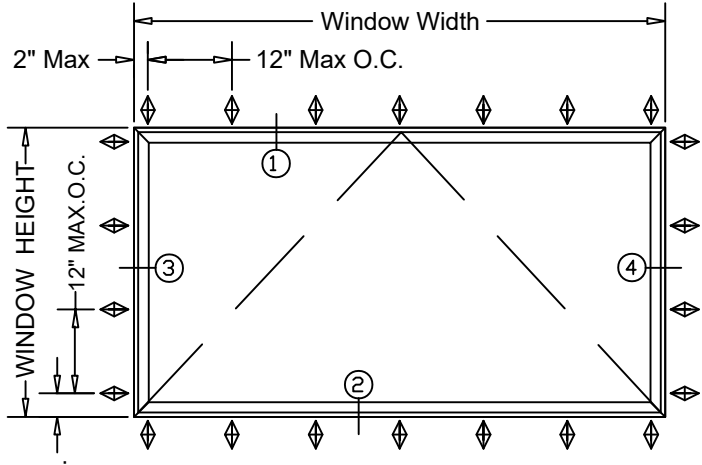
**NOTES:**

1. Installations depicted satisfy the requirements of the Florida Building Code, Building 8th Edition (2023) for design wind pressures and overall sizes noted.
2. Wood bucks, wood framing, steel stud framing, concrete and concrete masonry are by others and shall be designed by the architect or engineer of record to resist the loads imparted to them.
3. Wood bucks and wood framing are assumed S-P-F (G=0.55) or denser. Buck width shall be greater than the window frame width. Tapered or partial width buck strips are not allowed.
4. Steel stud frames are assumed to be a minimum 18 gauge 33 KSI steel.
5. Concrete masonry (CMU) shall conform to ASTM C90
6. Concrete shall be minimum f'c = 3,000 psi
7. Wood screws shall meet requirements of ANSI/ASME B18.6.1.
8. TEKS screws shall be ASTM A510 Grade 1018 or equivalent.
9. Hilti Kwik-Con + anchors as specified in NOA 21-0628.20.
10. Maximum shim thickness 1/4".
11. Products are not impact resistant and require an approved protection device if used in windborne debris regions.
12. Not for use in High Velocity Hurricane Zone (HVHZ).
13. Sealing and flashing strategies and overall water infiltration performance of the installed product are by others and not addressed by this document.

**CONTENTS**

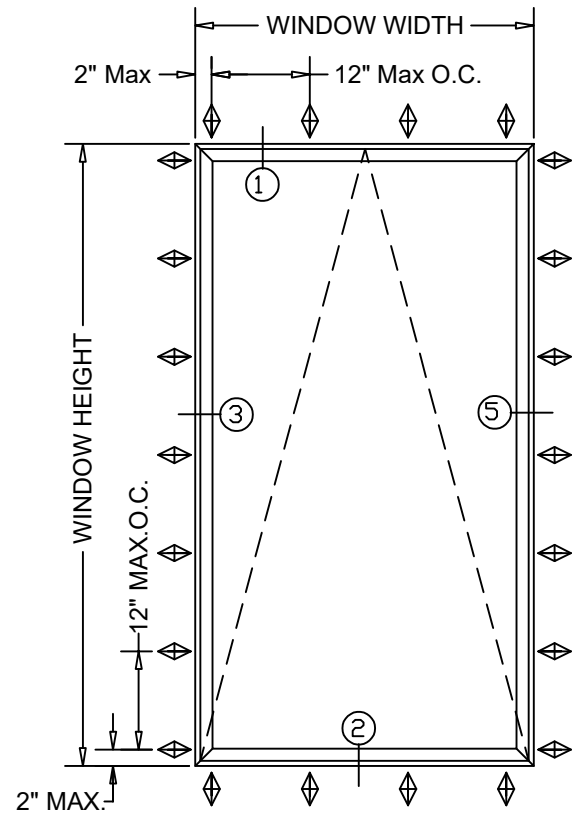
Sheet 1/6	Elevations and Notes
Sheet 2/6	Nail Fin Wood Substrates
Sheet 3/6	Nail Fin Wood Alternate Substrates
Sheet 4/6	Anchor Strap Wood Substrates
Sheet 5/6	Anchor Strap Alternate Substrates
Sheet 6/6	Strap Anchor Details

Maximum Glazing  
 1" Insulating Glass  
 Two lights 1/4" Annealed Glass  
 with 1/2" Spacer



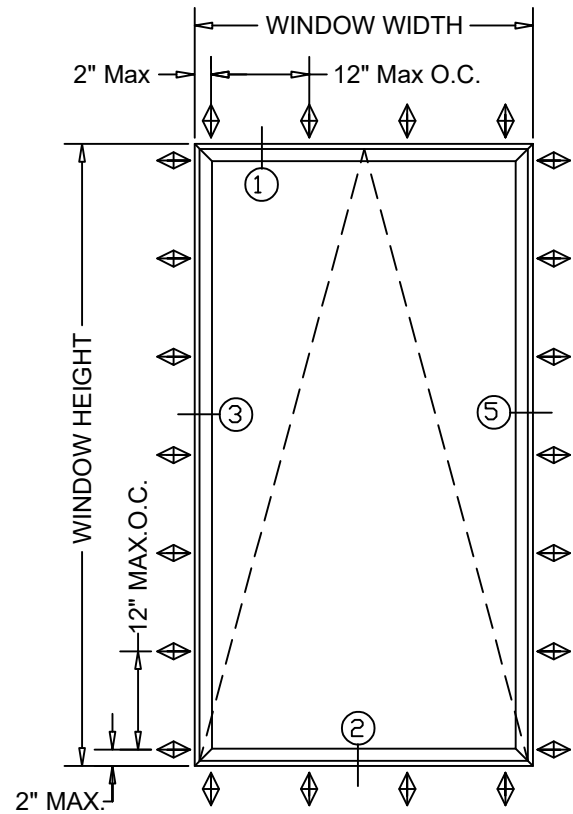
Maximum Dimensions and Design Pressures				
FW	FH	VENT-W	VENT-H	Pressure
60'	36'	58 1/4'	34 5/16'	± 70 PSF
DAYLIGHT OPENING		54'	30'	

**Mark A**



Maximum				
FW	FH	VENT-W	VENT-H	Pressure
36'	84'	34 3/8'	82 1/4'	± 70 PSF
DAYLIGHT OPENING		30'	77 3/4'	

**Mark B**



Maximum				
FW	FH	VENT-W	VENT-H	Pressure
48'	72'	46 1/4'	70 1/4'	± 70 PSF
DAYLIGHT OPENING		42'	66'	

**Mark C**

Tanya A Dolby, P.E.  
 FL P.E. No. 93536  
 Intertek - ATI  
 130 Derry Ct. York, PA 17406  
 (717) 764-7700  
 Project: Q6341.01

Project Name: **M600 AWNING**

Description: **GENERAL NOTES**

QUAKER WINDOW PRODUCTS WILL NOT BE RESPONSIBLE FOR FIELD MEASUREMENT, QUANTITIES, & INSTALLATION DESIGN. CONTRACTOR MUST VERIFY ALL DIMENSIONS.

PHONE (573)-744-5211  
 FAX (573)-744-5586  
 COMMERCIAL  
 FAX (573)-744-5822  
 www.quakerwindows.com

Scale: NONE  
 Sheet #: 1 of 6

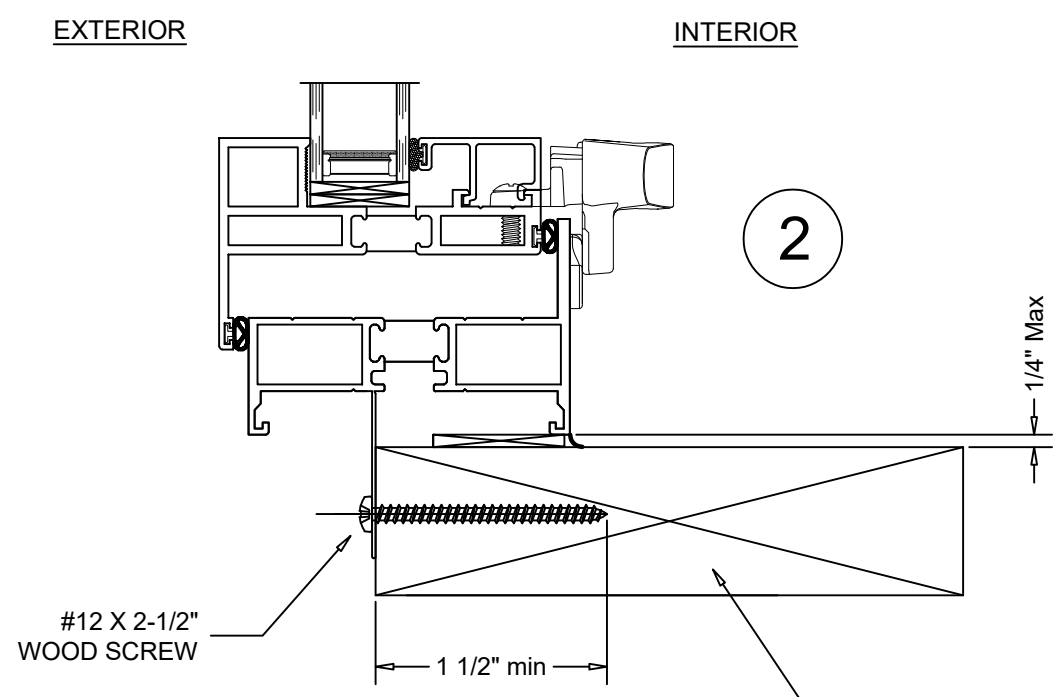
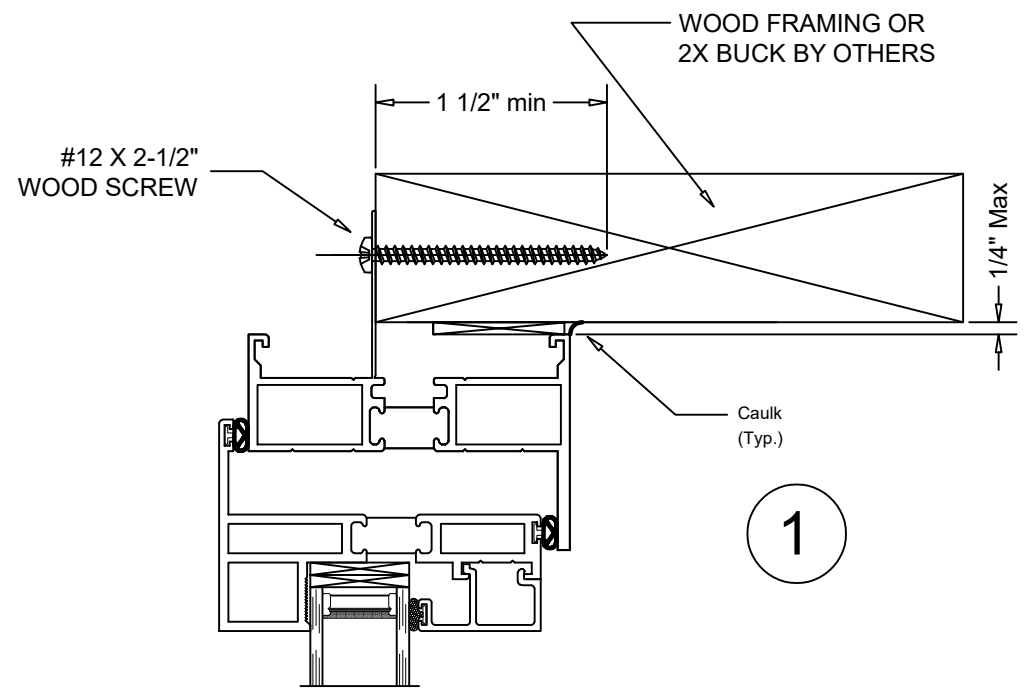
504 Highway 63 South  
 Freeburg, MO 65035  
 drafting@quakerwindows.com

Drawn By: **BUD**  
 Date: **09-21-2023**

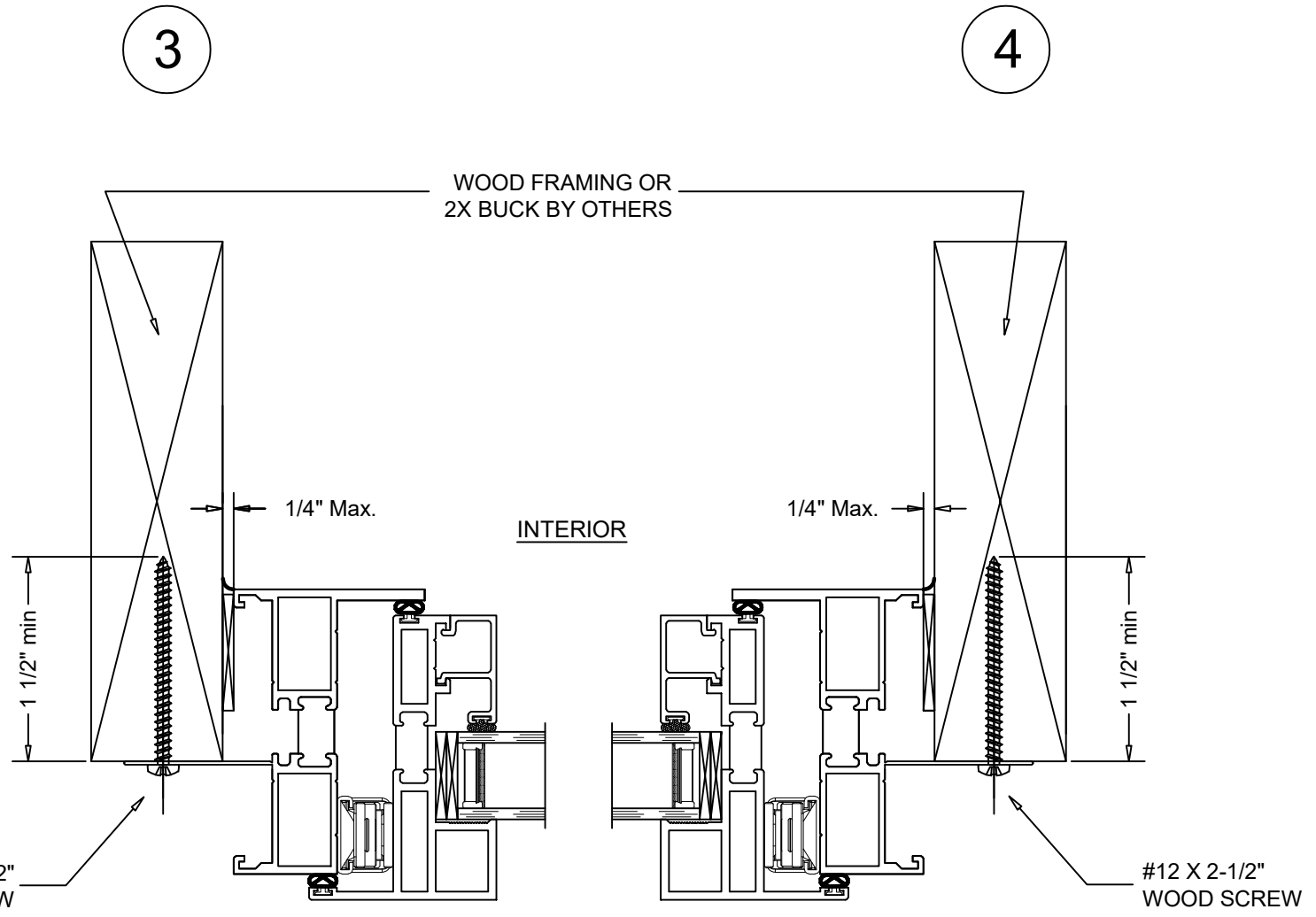
**INSTALLATION INSTRUCTIONS**

**ELEVATIONS & NOTES**

# NOTE: TYPICAL M600 PROJECT OUT WINDOW - NAIL FIN INSTALLATION



VERTICAL SECTION DETAIL  
WOOD FRAMING INSTALLATION



HORIZONTAL SECTION DETAIL  
WOOD FRAMING INSTALLATION

Tanya A Dolby, P.E.  
FL P.E. No. 93536  
Intertek - ATI  
130 Derry Ct. York, PA 17406  
(717) 764-7700  
Project: Q6341.01

Project Name:  
**M600 AWNING**  
**NAIL FIN-WOOD SURROUND**  
**INSTALLATION INSTRUCTIONS**

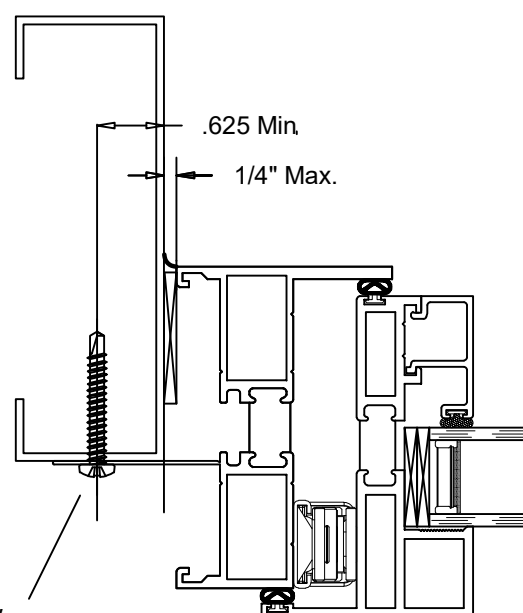
**GENERAL NOTES**  
QUAKER WINDOW PRODUCTS  
WILL NOT BE RESPONSIBLE  
FOR FIELD MEASUREMENT,  
QUANTITIES, & INSTALLATION  
DESIGN. CONTRACTOR MUST  
VERIFY ALL DIMENSIONS.

PHONE (573)-744-5211  
FAX (573)-744-5586  
COMMERCIAL  
FAX (573)-744-5822  
www.quakerwindows.com  
Scale: NONE  
504 Highway 63 South  
Freeburg, MO 65035  
drafting@quakerwindows.com  
Sheet #: 2 of 6  
Drawn By: BUD  
Date: 09-21-2023

# NOTE: TYPICAL M600 PROJECT OUT WINDOW - NAIL FIN INSTALLATION

Tanya A Dolby, P.E.  
 FL P.E. No. 93536  
 Intertek - ATI  
 130 Derry Ct. York, PA 17406  
 (717) 764-7700  
 Project: Q6341.01

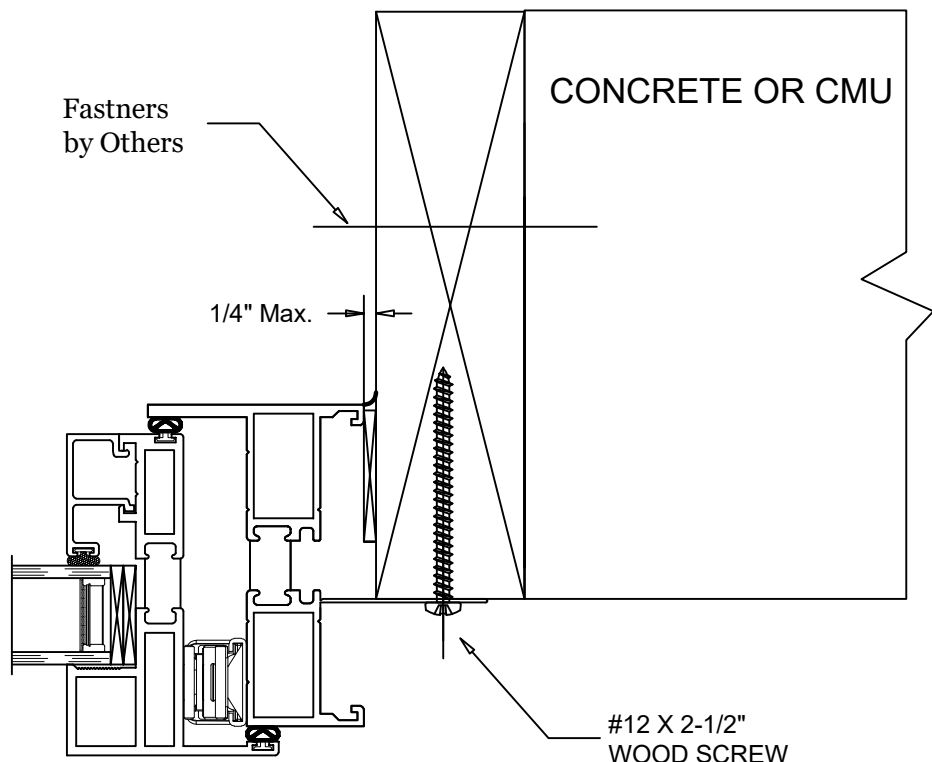
3



#10-16 TEKS SCREW  
 MIN 3 FULL THREAD  
 PENETRATION OF 18 GAGE  
 STEEL STUD

INTERIOR

4



CONCRETE OR CMU

#12 X 2-1/2"  
 WOOD SCREW

EXTERIOR

Project Name:  
**M600 AWNING**  
**NAIL FIN-ALTERNATE SURROUNDS**  
**INSTALLATION INSTRUCTIONS**

## GENERAL NOTES

QUAKER WINDOW PRODUCTS  
 WILL NOT BE RESPONSIBLE  
 FOR FIELD MEASUREMENT,  
 QUANTITIES, & INSTALLATION  
 DESIGN. CONTRACTOR MUST  
 VERIFY ALL DIMENSIONS.

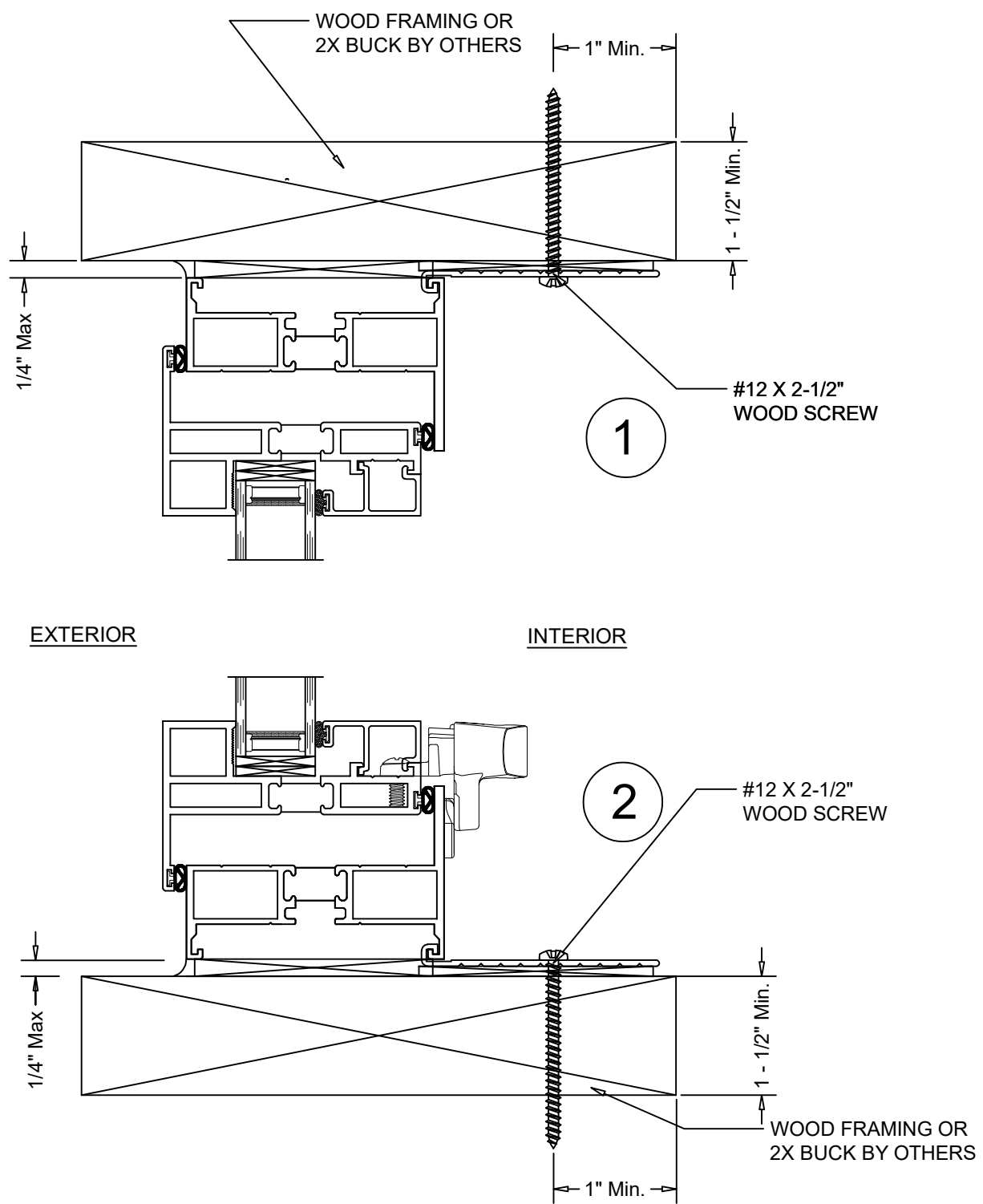
PHONE (573)-744-5211  
 FAX (573)-744-5586  
 COMMERCIAL  
 FAX (573)-744-5822  
 www.quakerwindows.com  
 Scale: NONE  
 Sheet #: 3 of 6

**QUAKER**  
 COMMERCIAL WINDOW AND DOOR

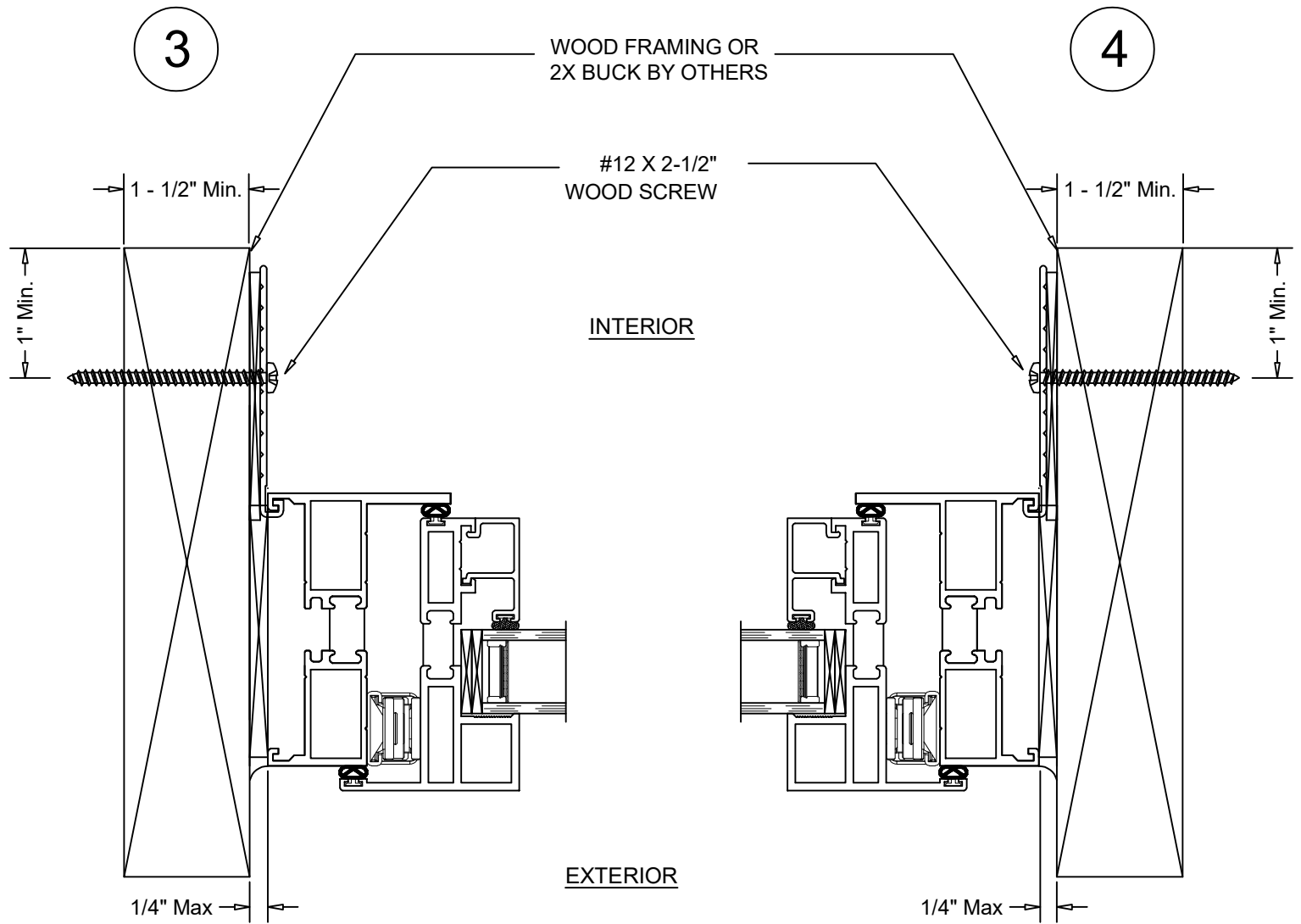
504 Highway 63 South  
 Freeburg, MO 65035  
 drafting@quakerwindows.com

Drawn By: BUD  
 Date: 09-21-2023

# NOTE: TYPICAL M600 PROJECT OUT WINDOW -STRAP ANCHOR INSTALLATION



VERTICAL SECTION DETAIL  
WOOD FRAMING INSTALLATION

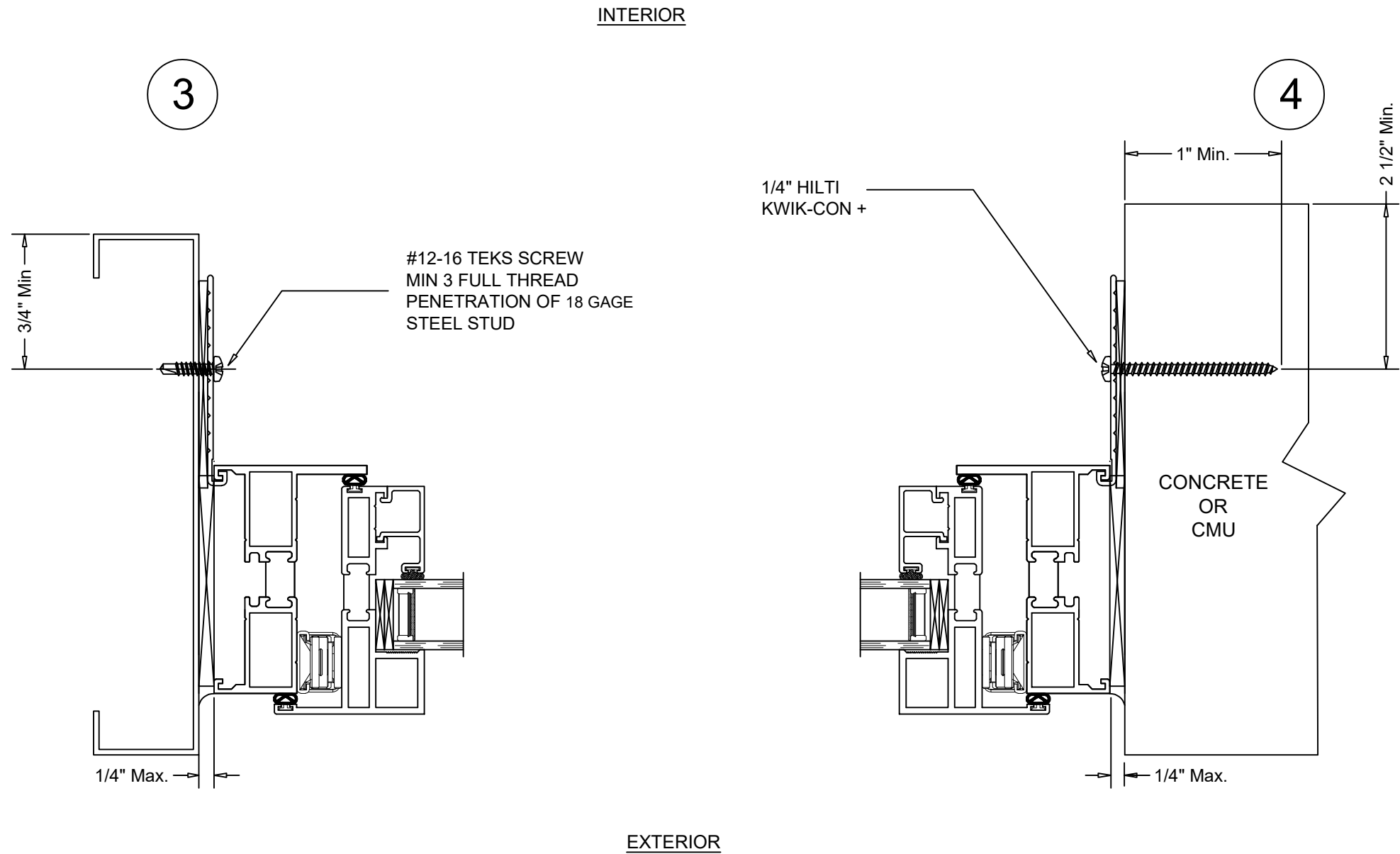


HORIZONTAL SECTION DETAIL  
WOOD FRAMING INSTALLATION

Tanya A Dolby, P.E.  
FL P.E. No. 93536  
Intertek - ATI  
130 Derry Ct. York, PA 17406  
(717) 764-7700  
Project: Q6341.01

Project Name:		<b>M600 AWNING</b>	
Description:		<b>ANCHOR STRAP-WOOD SURROUND</b>	
GENERAL NOTES		INSTALLATION INSTRUCTIONS	
QUAKER WINDOW PRODUCTS WILL NOT BE RESPONSIBLE FOR FIELD MEASUREMENT, QUANTITIES, & INSTALLATION DESIGN. CONTRACTOR MUST VERIFY ALL DIMENSIONS.			
PHONE (573)-744-5211	FAX (573)-744-5586	Scale:	NONE
COMMERCIAL	FAX (573)-744-5822	www.quakerwindows.com	Sheet #: 4 of 6
504 Highway 63 South	Freeburg, MO 65035	Drawn By:	BUD
drafting@quakerwindows.com		Date:	09-21-2023

Tanya A Dolby, P.E.  
 FL P.E. No. 93536  
 Intertek - ATI  
 130 Derry Ct. York, PA 17406  
 (717) 764-7700  
 Project: Q6341.01



**QUAKER**  
 COMMERCIAL WINDOW AND DOOR

PHONE (573)-744-5211  
 FAX (573)-744-5586  
 COMMERCIAL  
 FAX (573)-744-5822  
 www.quakerwindows.com

Scale: NONE

504 Highway 63 South  
 Freeburg, MO 65035  
 drafting@quakerwindows.com

Drawn By: BUD  
 Date: 09-21-2023

Sheet #: 5 of 6

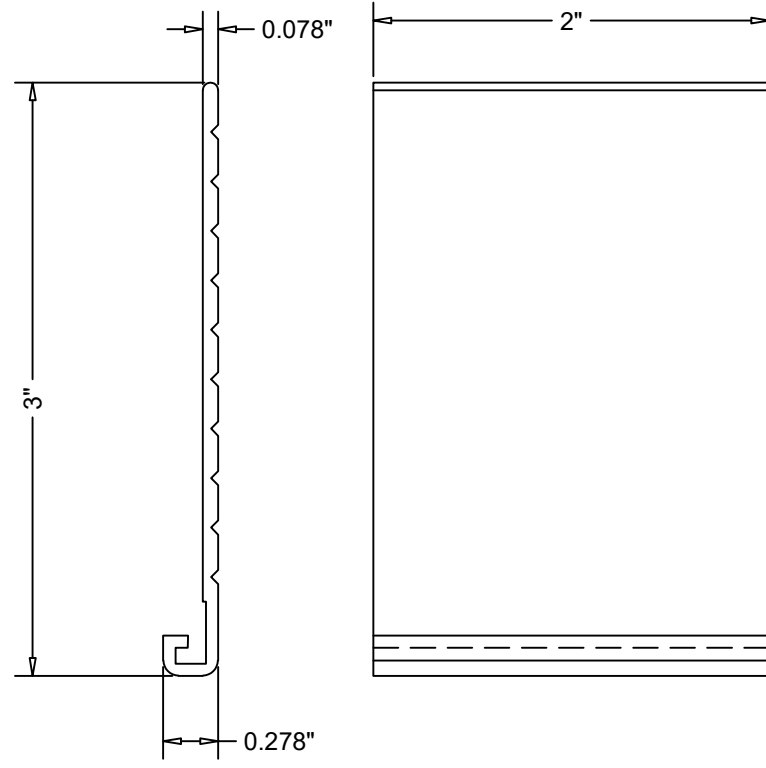
**STRAP ANCHOR DETAILS**

Description:  
 QUAKER WINDOW PRODUCTS  
 WILL NOT BE RESPONSIBLE  
 FOR FIELD MEASUREMENT,  
 QUANTITIES, & INSTALLATION  
 DESIGN. CONTRACTOR MUST  
 VERIFY ALL DIMENSIONS.

Revision #:	1	Date:	04/11/21	By:	MJT
Revision #:	2	Date:	05/09/21	By:	MJT
Revision #:	1	Date:	04/11/21	By:	MJT

Project Name:

**M600 AWNING**  
**ANCHOR STRAP-ALTERNATE SURROUNDS**  
**INSTALLATION INSTRUCTIONS**



Strap Anchor  
6063-T6 Aluminum  
Die QUA 19801

Tanya A Dolby, P.E.  
FL P.E. No. 93536  
Intertek - ATI  
130 Derry Ct. York, PA 17406  
(717) 764-7700  
Project: Q6341.01

Project Name:  
**M600 AWNING  
ANCHOR STRAP DETAIL  
INSTALLATION INSTRUCTIONS**

Description: QUAKER WINDOW PRODUCTS WILL NOT BE RESPONSIBLE FOR FIELD MEASUREMENT, QUANTITIES, & INSTALLATION DESIGN. CONTRACTOR MUST VERIFY ALL DIMENSIONS.	Revision #:	Date:	By:
	Revision #:	Date:	By:
	Revision #:	Date:	By:

 PHONE (573)-744-5211 FAX (573)-744-5586 COMMERCIAL FAX (573)-744-5822 www.quakerwindows.com	Scale:	Sheet #:
	504 Highway 63 South Freeburg, MO 65035 drafting@quakerwindows.com	NONE
Drawn By:	Date:	
BUD	09-21-2023	